



La Plata Electric Association, Inc.

A Touchstone Energy® Cooperative 

P.O. Box 2750 Durango, CO 81302-2750

Phone: (970) 247-5786 • Fax (970) 247-2674

[www.lpea.coop](http://www.lpea.coop)

April 25, 2017

Ron LeBlanc, City Manager  
City of Durango  
949 E. 2nd Avenue  
Durango, Colorado 81301

Dear Ron LeBlanc:

As requested in the Franchise Agreement, enclosed is the 2016 LPEA Report on Energy Efficiency and Renewable Energy Programs within the Durango city limits.

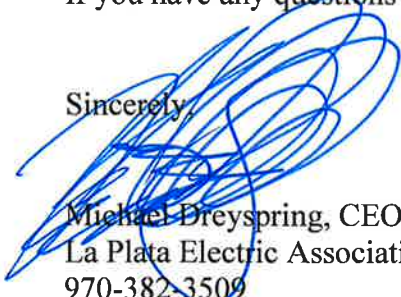
In 2016, LPEA staff worked with the City of Durango to review the electrical usage, demand and electrical costs for various buildings and operations. LPEA helped the City of Durango with their effort to become a STAR Certified Community, providing renewable energy supply data. At the Water Treatment Plant, three VFD motors were installed in June 2016 and the City of Durango received energy efficiency rebates from LPEA totaling \$7,050. Also, an extensive review of LED Street Lighting is in process with LPEA and the City of Durango working together to determine various needs at different locations.

In 2016, LPEA hosted several Lighting Workshops, providing information to both residential and commercial members, regarding the energy efficiency and the technological advances in LED lighting.

LPEA has upgraded to an AMI metering system with 99% deployment within the city limits of Durango. The AMI metering system provides direct online access to daily and hourly usage data, along with monthly cost comparisons through the Smart Hub portal on LPEA's website [www.lpea.coop](http://www.lpea.coop). We will continue to meet with key personnel at the City of Durango to help utilize the Smart Hub and to review the electric service and rates.

If you have any questions regarding this information, please contact me.

Sincerely,



Michael Dreyspring, CEO  
La Plata Electric Association  
970-382-3509

LPEA is an equal opportunity provider and employer M/F/Disability/Veteran.

If you wish to file a Civil Rights program complaint of discrimination, complete the USDA Discrimination Complaint Form, found online at [http://www.ascr.usda.gov/complaint\\_filing\\_cust.html](http://www.ascr.usda.gov/complaint_filing_cust.html), or at any USDA office, or call (866) 632-9992 to request the form. You may also write a letter containing all of the information requested in the form. Send your completed complaint form or letter to us by mail at U.S. Department of Agriculture, Director, Office of Adjudication, 1400 Independence Avenue, S.W., Washington, D.C. 20250-9410, by fax (202) 690-7442 or email at [program.intake@usda.gov](mailto:program.intake@usda.gov).





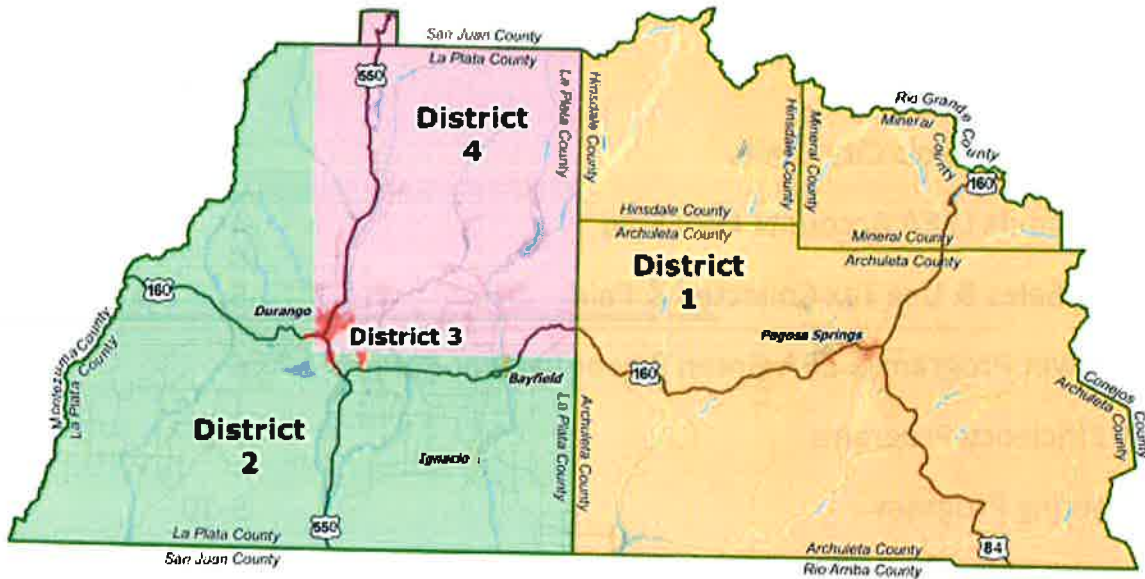
**Energy Efficiency and Renewable Energy Programs**  
**Within Durango's City Limits**  
**Franchise Agreement Report for LPEA Accounts**  
**2016**

	<u>Page #s</u>
LPEA District 3 – Durango's City Limits	2-3
Durango's City Limits LPEA Accounts kWh Sold	4
Franchise Fee / Sales & Use Tax Collected & Paid	5
LPEA Green Power Program & EPA Green Power Partner Report	6
LPEA Energy Efficiency Programs	7-8
LPEA Net Metering Program	9-10
LPEA Community Solar Garden Program	11

# LPEA Board of Directors and their Districts

Electric cooperatives, such as LPEA, are private, independent electric utilities owned by and operated for the benefit of the members they serve. Everyone who pays their electric bill to LPEA is eligible to be a member of the cooperative, and as such has the right to both vote for the directors who represent them on the board, and run for a seat on that board.

The Board of Directors determines the policies and overall directives of the cooperative, plus provides the LPEA staff with goals and objectives for the business. Board members serve three-year terms and are welcome to run as incumbents once that term is up.



## LPEA District 3 – Durango’s City Limits

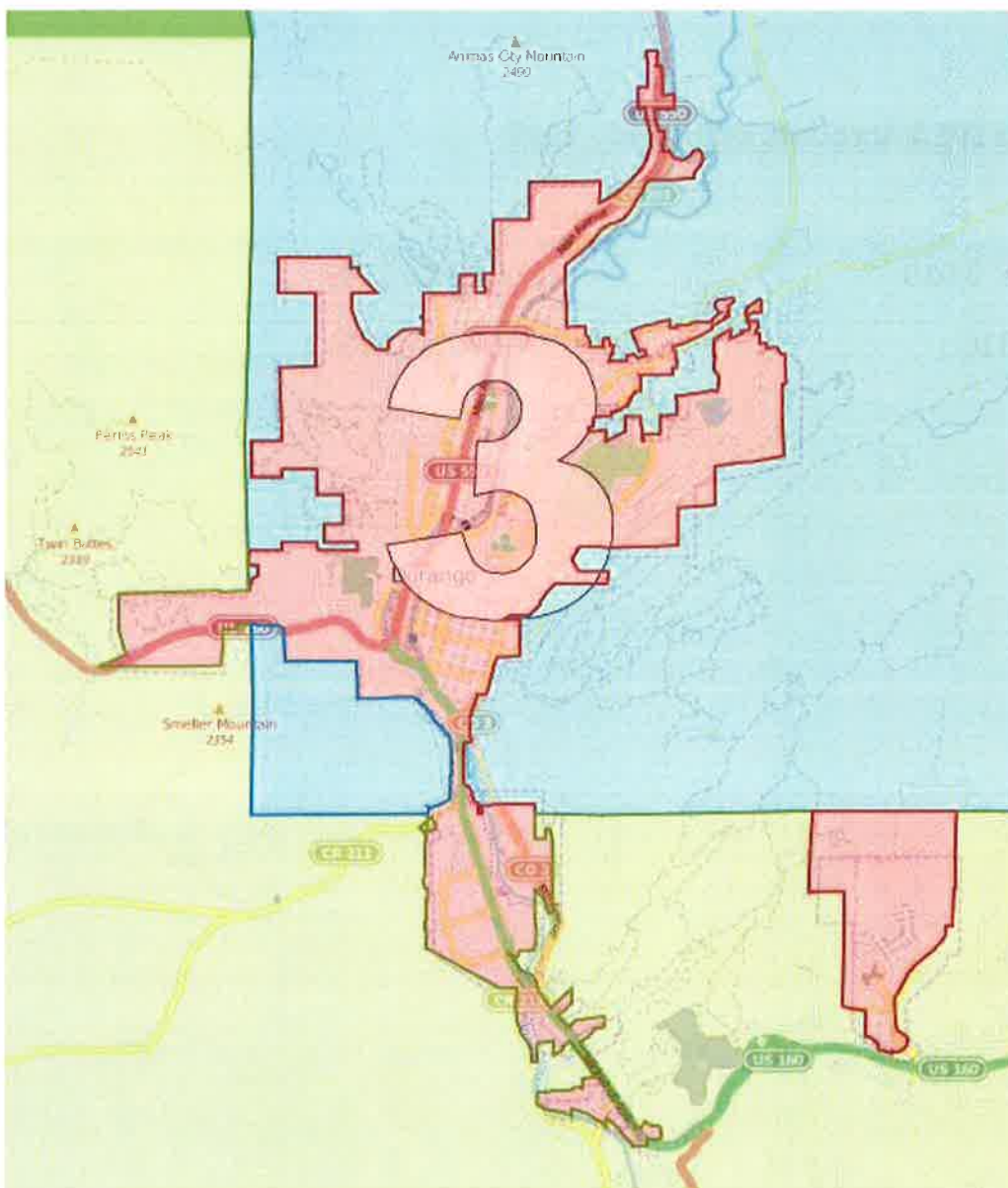
### LPEA Board of Directors:

Britt Bassett: 970.375.2624 or [bbassett@lpea.coop](mailto:bbassett@lpea.coop)

Jeff Berman: 970.749.6911 or [jberman@lpea.coop](mailto:jberman@lpea.coop)

Doug Lyon: 970.560.1753 or [dlyon@lpea.coop](mailto:dlyon@lpea.coop)

### LPEA District 3 Map



## **LPEA Accounts kWh Sold – 2016**

LPEA, a Touchstone Energy Cooperative established in 1939, provides to its more than 32,000 members, with 42,300 meters, safe, reliable electricity at the lowest reasonable cost, while being environmentally responsible.

# of Active Accounts: 42,389

kWh Sold: 945,914,145

## **Durango's City Limits LPEA Accounts kWh Sold - 2016**

# of Active Accounts: 9,919

% of Total: 23%

kWh Sold: 174,099,026

% of Total: 18%

## **Franchise Fee / Sales & Use Tax Collected & Paid – 2016**

LPEA and the City of Durango signed a 20 year Franchise Agreement beginning in 2013. The Franchise Fee assessed to LPEA accounts within the City Limits of Durango is 4.67%.

Every year LPEA collects Sales Tax from the LPEA accounts within Durango's City Limits. Every year LPEA pays Use Tax to the City of Durango.

2016 Franchise Fee: \$895,176

2016 Sales & Use Tax: \$539,029

## LPEA Green Power Program & EPA Green Power Partnership Report – 2016

The Community of Durango (LPEA accounts in Durango’s City Limits) has been recognized as an EPA Green Power Partner since 2009. Through LPEA’s Green Power Program accountholders can offset a portion or all of their electric usage by purchasing Green Power. “Just One Block” of Green Power costs \$0.09 per month and is equal to 100 kWh.

In 2016, the Community of Durango purchased 263,201 blocks of Green Power offsetting a total of 26,320,072 kWh of electric usage. An average LPEA residential household consumes approximately 8,000 kWh annually. Thus, the Green Power participation of the Community of Durango is equivalent to offsetting the average annual consumption of 3,290 households. The annual investment for this Green Power by the Community of Durango was approximately \$23,688.

LPEA Green Power Program Total:	37,796,300 kWh	
Durango’s City Limits Green Power:	26,320,072 kWh	% of Total: 70%

Durango’s City Limits Green Power as % of Durango’s City Limits kWh Sold: 15%



## **LPEA Energy Efficiency Programs – 2016**

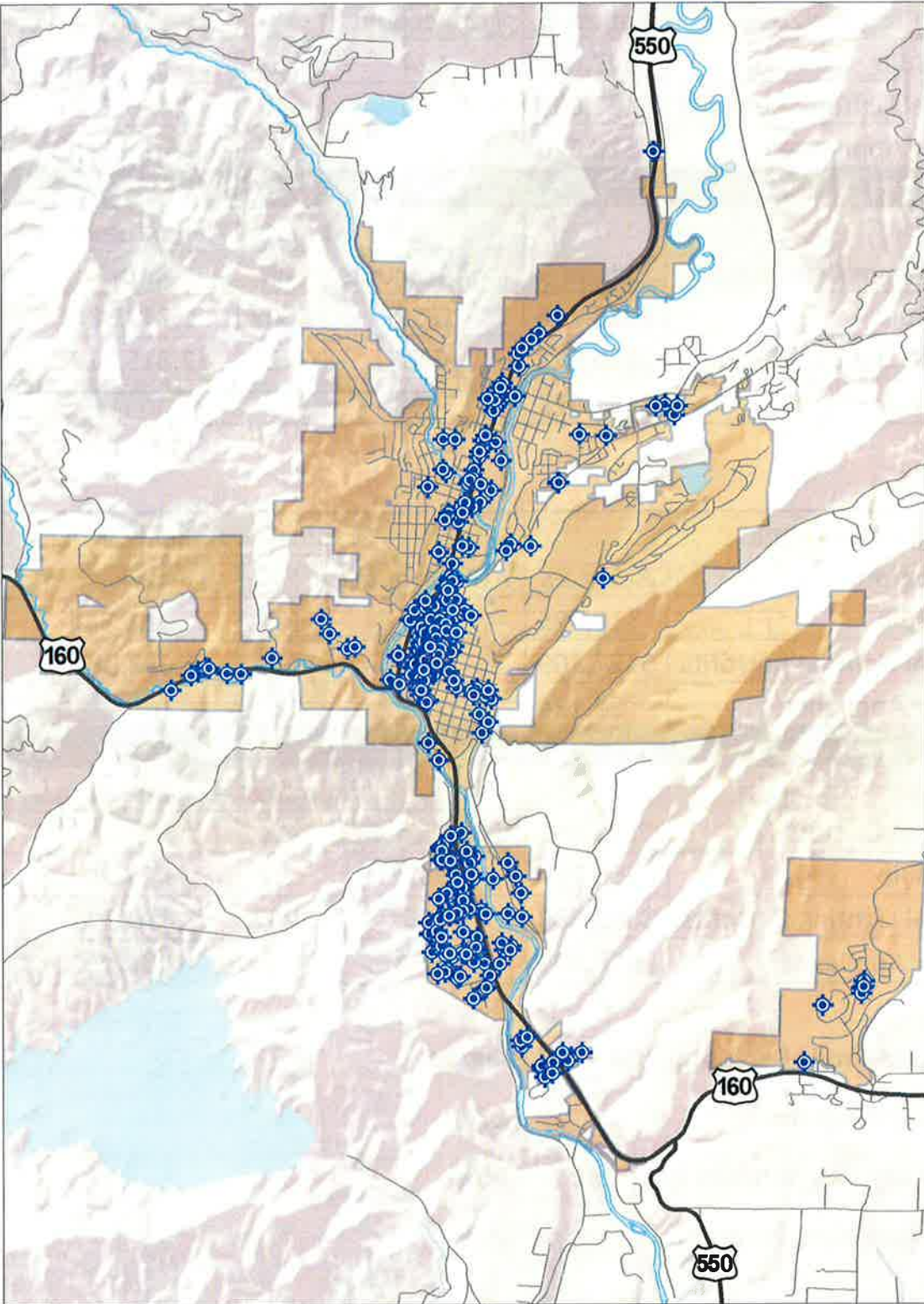
Total Program 2016	Rebate \$	Estimated Annual Savings			
		# of Accounts	kW	kWh	\$
LED Light Bulb	\$47,695	424	462	504,504	\$60,036
Commercial Lighting Retrofits	\$181,050	120	648	2,426,112	\$288,707
Energy Star Appliance	\$20,620	597			
<b> </b>					
Total Program Cumulative	Rebate \$	Estimated Annual Savings			
		# of Accounts	kW	kWh	\$
LED Light Bulb	\$213,716	1822	1602	1,749,384	\$208,177
Commercial Lighting Retrofits	\$926,573	638	3423	12,815,712	\$1,525,070
Energy Star Appliance	\$192,025	5068			

Durango's City Limits Program 2016	Rebate \$	Estimated Annual Savings			
		# of Accounts	kW	kWh	\$
LED Light Bulb	\$10,425	116	107	116,844	\$13,904
Commercial Lighting Retrofits	\$127,809	80	436	1,632,384	\$194,254
Energy Star Appliance	\$4,124	119			
<b> </b>					
Durango's City Limits Program Cumulative	Rebate \$	Estimated Annual Savings			
		# of Accounts	kW	kWh	\$
LED Light Bulb	\$55,217	532	437	477,204	\$56,787
Commercial Lighting Retrofits	\$603,639	425	2257	8,450,208	\$1,005,575
Energy Star Appliance	\$38,405	1014			

### **Durango's City Limits Percentage to Total Program**

LED Light Bulb Program:	27%
Commercial Lighting Retrofits Program:	66%
Energy Star Appliance Program:	20%

# Durango Commercial Lighting



### Legend

- ◆ Commercial Lighting Locations
- Roads and Streets
- City of Durango



Data Sources: La Plata County GIS  
LPEA GIS  
Date: 4/18/2017

**LPEA Net Metering Program – 2016**

Total Program	REC \$	Estimated Annual Savings			
		# of Accounts	kW	kWh	\$
Net Metering 2016	\$155,776	145	1204	1,933,624	\$230,101
Net Metering 2003 - 2016	\$2,008,837	927	5695	9,146,170	\$1,088,394

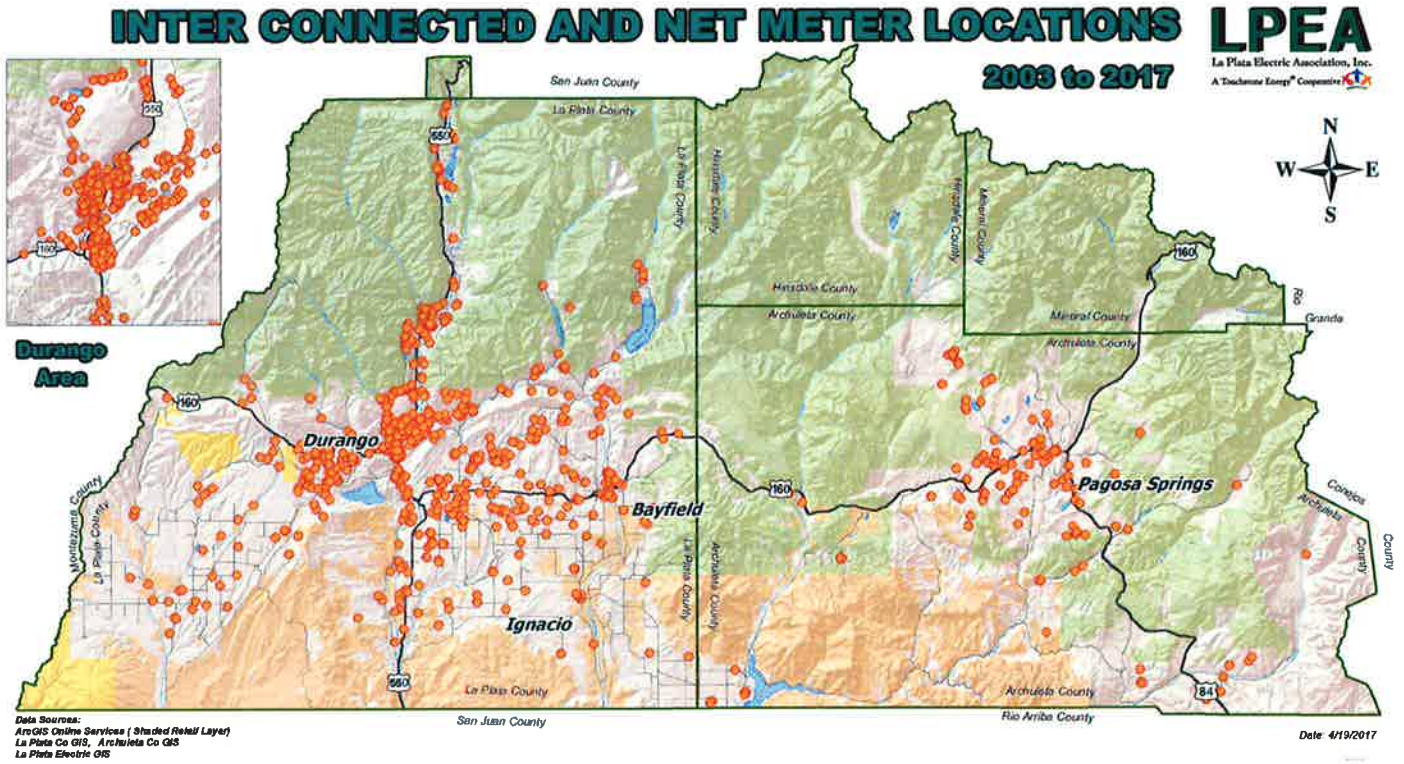
Durango's City Limits Program	REC \$	Estimated Annual Savings			
		# of Accounts	kW	kWh	\$
Net Metering 2016	\$56,972	47	433	695,398	\$82,752
Net Metering 2003 - 2016	\$605,380	259	1683	2,702,898	\$321,645

**Durango's City Limits Percentage to Total Program**

Net Metering Program 2016: 35%

Net Metering Program 2003-2016: 29%

# Map of Interconnected & Net Metering Locations



## **LPEA Community Solar Garden Program**

LPEA's Board of Directors approved Policy 366 Community Solar Garden Program in September 2013. Four Community Solar Garden (CSG) projects have been licensed for generation and started production at the end of 2014. The CSG projects are managed by private entities independent of LPEA but all LPEA members are eligible to participate and purchase a CSG subscription. The four CSG organizations are:

- 1) Armadillo Community Solar Garden, LLC  
Gene Fisher/Jordan House  
1555 Colorado Highway 3  
50 kW (DC)  
2016 Annual Production – 68,200 kWh
  
- 2) Solar Garden Partners 2, LLP  
John Shaw  
2750 Main Avenue (Boys and Girls Club)  
50 kW (DC)  
2016 Annual Production – 93,300 kWh
  
- 3) Solar Garden Partners 1, LLP  
John Shaw  
809 County Road 316, Ignacio  
200 kW (DC)  
2016 Annual Production – 390,500 kWh
  
- 4) Sun Mesa Solar Gardens, LLC  
Ben Jason  
187 Redman Lane  
50 kW (DC)  
2016 Annual Production – 84,600 kWh

