

# LPEA October 2023 DIVISION DASHBOARDS



Capital project near Electra Lake





# Key Performance Indicators

| Attribute                  | Metric  | Goal        | Actual  | Status |
|----------------------------|---|-------------|---------|--------|
| Safety                     | Average Safety Meeting Attendance (%)                               | > = 80.00   | 97.04   | ✓      |
| Reliability                | System Average Interruption Duration Index (SAIDI, minutes)         | < 60.000    | 71.55   | ✗      |
|                            | System Average Interruption Frequency Index (SAIFI, outages/member) | < 1.000     | 0.832   | ✓      |
| Finance                    | Financial Health Score  | > = 100.00  | 242.80  | ✓      |
|                            | YTD Operating Margin (% of Revenue)                                 | > = 2       | 5.90    | ✓      |
|                            | Cash Reserves (% of Operating Costs)                                | 12 - 20     | 12      | ✓      |
|                            | Debt Financing (% of Equity)  | < = 100     | 66      | ✓      |
|                            | Modified Debt Service Coverage (MDSC)                               | > = 1.35    | 2.43    | ✓      |
|                            | Equity (%)  | 40 - 55     | 54      | ✓      |
| Beneficial Electrification | BE Sales (kWh)  | > = 180,000 | 251,050 | ✓      |
| Information Technology     | Average Critical System Uptime (%)                                  | > = 99.9    | 99.974  | ✓      |



Meeting or exceeding performance goal



Monitoring performance



Not on track to meet performance goal

Date Range: 01/01/2023 - 10/31/2023

Definitions of attributes can be found at the end of this report.

# Be safe and excellent in all we do



## **TARGET: EXPERIENCE NO LOST-TIME INCIDENTS OR ACCIDENTS**

- ✗ An employee was working with their operations crew to manually lift and set a meter on pedestal (MOPED) when he felt a pain in his lower back and groin.
- ✓ LPEA performed a public arc demo and safety talk at the Durango Fire Protection District. This year's theme was "Being a Safe Driver."

## **TARGET: EXPERIENCE NO CYBER INCIDENTS THAT DISRUPT BUSINESS PROCESSES**

- ✓ Zero cyber incidents.

## **TARGET: ACHIEVE 100% REGULATORY COMPLIANCE**

- ✓ Developed a Cybersecurity Incident Response Plan and conducted our annual cybersecurity incident tabletop exercise. These both help LPEA prepare for an actual cybersecurity incident.
- ✓ Hot Sticks and Hotline tools are required to be tested once every two years according to OSHA. However, LPEA tests them every year. All hotsticks and hotline tools are inspected, cleaned, and tested in-house by crews. Safety & Compliance and Operations are collaborating to update and formalize LPEA's SOP.

- ✓ 100% of staff completed the required monthly training for cybersecurity.

## **TARGET: 100% OF DEPARTMENTS USE DATA ANALYTICS TO IMPROVE DECISION MAKING**

- ✓ Made progress on the launch of a new Smarthub module, Bidgely, that will give members real time access to their energy consumption.



Tabletop exercise for cybersecurity

# Keep the lights on



## TARGET: COMPLY WITH LPEA'S WILDFIRE MITIGATION PLAN

- ✓ Crews cleared an overgrown right-of-way under an important tie line in partnership with the La Plata County Office of Emergency Management. This was an important fire mitigation effort in preparation for a rebuild.
- ✓ Crews replaced 4 reject poles, completed 1 raptor protection, and trimmed approximately 25 miles of line. The number of pole replacements are down due to a combination of the quantity of capital work projects and a 400% increase in new construction member jobs over the last two months.

## TARGET: COMPLETE THE 2023 BUDGETED CAPITAL WORK PROJECTS (CWP)

- ✓ As of the end of October, LPEA has completed 78% of its CWP:
  - Loma Linda single phase to three phase project completed
  - Tecolote and Trails underground cable replacement jobs have been completed
  - Overhead Antelope tie line completed
  - Rafter J tie line vegetation management has been cleared

These projects all ensure continued reliability and the overhead rebuild and vegetation management are examples of fire mitigation efforts.

- ✓ CWP 300-166: Trails cable replacement, and 200-51: Lakeside tie line, were completed, increasing reliability and redundancy in the Pagosa area.

## TARGET: ACHIEVE SAIDI/SAIFI TARGETS

- ✓ There were 41 unplanned outages. The majority of outages were due to dry lightning and small animals, except 4 member-caused dig-ins.





# Source clean, local, low-cost power

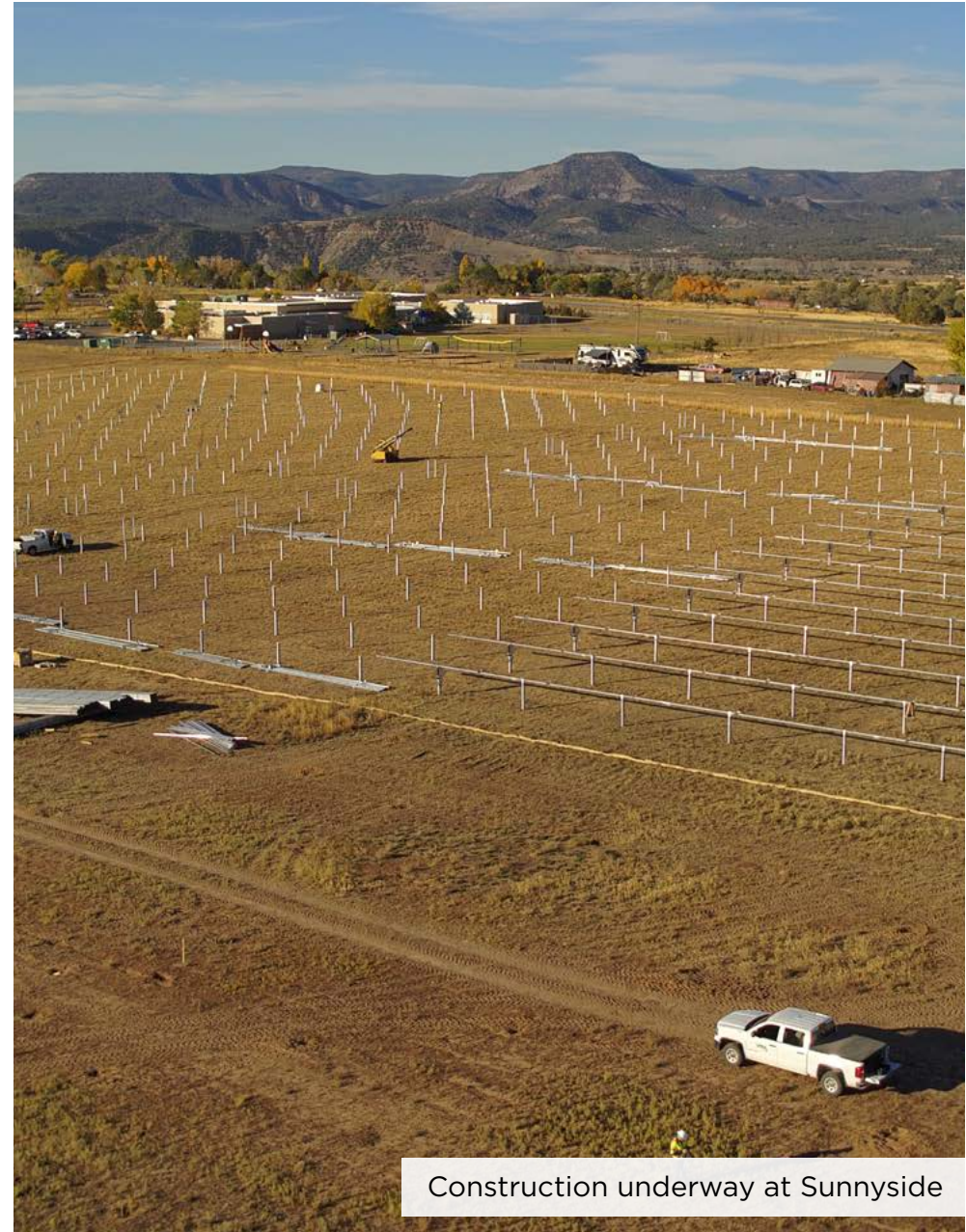


## **TARGET: CONTINUE TO PURSUE LOCAL CLEAN POWER PROJECTS**

- ✓ Construction is underway at LPEA's Sunnyside Solar project.

## **TARGET: CONTINUE TO MAKE PROGRESS ON LPEA'S 3-PRONGED POWER SUPPLY STRATEGY**

- ✓ Update will be given in executive session.



Construction underway at Sunnyside

# Be a trusted community partner



## TARGET: CREATE TRAINING AND EDUCATION PROGRAMS FOR KEY STAKEHOLDERS WITH REGULAR TOUCHPOINTS

- ✓ LPEA staff hosted a “Build a Robot” workshop at the Durango Boys & Girls Club.
- ✓ LPEA staff presented on the lessons learned from our electric bus project at the Colorado Electric Vehicle Coalition (CEVC).
- ✓ LPEA staff provided a heating technologies webinar to 91 attendees and an additional 190 received the presentation slides and webinar recording.
- ✓ Jessica was a keynote speaker in Arizona at the Gridliance Transmission Solutions Symposium. She spoke to various leaders in the utility industry & state about our electric bus pilot program and other industry leading advancements that LPEA has initiated.

## TARGET: ACHIEVE SURVEY-TO-SURVEY IMPROVEMENT OF OVERALL MEMBER SATISFACTION METRICS

- ✓ No updates from last month.

## TARGET: INCREASE SELF-SERVICE AND COMMUNICATION OPTIONS FOR MEMBERS

- ✓ Deployed a new text marketing campaign that successfully increased our paperless bill sign-ups.



Students at the Boys & Girls Club “Build a Robot” workshop

# Maintain strong financial health



## **TARGET: OPERATING MARGIN AT 2%**

- ✓ 5.90% YTD - Continuing cost control management is keeping this metric on target.

## **TARGET: CASH RESERVES AT 12-20%**

- ✓ 12% YTD - We continue to meet this goal for October.

## **TARGET: EQUITY PERCENTAGE IS 40-55%**

- ✓ 54% YTD - We continue to meet this goal for October.

## **TARGET: LONG-TERM DEBT IS LESS THAN 100% OF EQUITY**

- ✓ 66% YTD - We continue to meet this goal for October.

## **TARGET: MDSC IS GREATER THAN OR EQUAL TO 1.35 (DEBT COVENANT)**

- ✓ 2.43 YTD - A decrease in operating margins has caused this KPI to fall slightly from the prior month but still remains strong - covering our long term debt service needs.



# Prepare for the future



## TARGET: WIN GRANT FUNDS TO SUPPORT LPEA INITIATIVES

### ✓ GRANT TRACKING:

*(Italics indicate a month over month change)*

Awarded to LPEA: 2 = \$1,740,000

- TripSaver resiliency grant with the Southern Ute Indian Tribe (SUIT)
- *U.S. Department of Energy (DOE) wildfire resilience grant for undergrounding*

Awarded to others with LPEA help: 1 = \$200,000

- Pagosa to Durango transit grant

Grants pending: 2 = \$13,340,000

- USDA Powering Affordable Clean Energy (PACE) grant for 5MW solar+storage Sunnyside expansion. We are compiling the full application now
- Empowering Rural America (New ERA) - 25 MW solar generation project

Grants in progress: 2

- Environmental Protection Agency (EPA) - Clean School Bus Program

Grant application denied: 1

- *DOE wildfire mitigation grant for Vipera*

## TARGET: CONTROL 3,000 KW OF DISTRIBUTED ENERGY RESOURCES (DER)

- ✓ LPEA has 3,327 kW of DER assets under its control which is a 141 kW increase over last month. This is due to the continued deployment of managed electrical vehicle (EV) chargers and more Electric Thermal Storage (ETS) heaters transitioning over to active control devices instead of timers. These managed DER assets reduce LPEA's peak power purchases and increase operational flexibility.
- ✓ LPEA staff provided key input to the DOE for proposed rule-making regarding water heaters. LPEA was instrumental in most of the comments provided throughout a National Rural Electric Cooperative Association (NRECA) letter to the DOE, where much of the supporting data came from our Animas View Direct Install pilot project.

## TARGET: DEVELOP PARTNERSHIPS TO ACHIEVE THE BOARD'S BROADBAND GOAL

- ✓ No updates from last month.