

LPEA MAY 2025 DIVISION DASHBOARD





Key Performance Indicators

Be Safe And
Excellent In All
We Do

Keep The Lights
On

Source Clean,
Local, Lowest
Reasonable Cost
Power

Be A Trusted
Community
Partner

Maintain Strong
Financial Health

Prepare For The
Future

Appendix

KEY PERFORMANCE INDICATORS

Attribute	Metric	Goal	Actual	Status
Safety	Average Safety Meeting Attendance (%)	> = 80.00	97.60	✓
	Lost-time Incidents	0	0	✓
Reliability ¹	System Average Interruption Duration Index (SAIDI, minutes)	< 100.00	26.83	✓
	System Average Interruption Frequency Index (SAIFI, outages/member)	< 1.00	0.50	✓
Finance	Financial Health Score	> = 100.00	238.76	✓
	YTD Operating Margin (% of Revenue)	> = 3%	5.4%	✓
	Cash Reserves (% of Operating Costs)	12 - 20	5.01	!
	Debt Financing (% of Equity)	< = 100	58	✓
	Modified Debt Service Coverage (MDSC)	> = 1.35	2.76	✓
	Equity (%)	40 - 55%	56%	✓
Beneficial Electrification	BE Sales (kWh)	> = 106,000	111,111	✓
Information Technology	Average Critical System Uptime (%)	> = 99.9	100.00	✓

✓ Meeting or exceeding performance goal

! Monitoring performance

✗ Not on track to meet performance goal

Definitions of attributes can be found at the end of this report.

¹Reliability is measured cumulatively over the year. The 100 minute target is our annual goal and is not monthly.

The date range for this chart is 01/01/2025 - 05/31/2025.

BE SAFE AND EXCELLENT IN ALL WE DO

TARGET: ENSURE A CULTURE OF SAFETY WITH ZERO LOST-TIME INCIDENTS AND CONTINUOUS IMPROVEMENT IN SAFETY PROTOCOLS

- ✓ No lost-time incidents in May.
- ✓ Achieved 100% regulatory safety compliance in May.
- ✓ The Safety & Compliance Team received compliance recognition from the Air Pollution Control Division (APCD) for our Large Entity Reporting (LER) submittal. The LER rule was designed to help Colorado meet its greenhouse gas reduction, and the information gathered will help assess the feasibility of transition to zero-emissions vehicles.
- ✓ The Safety & Compliance Team hosted a dual-purpose tabletop exercise. The first portion of the meeting provided training on communication channels and incident command (IC) and the second half engaged the appropriate employees in how to address a substation fire.
- ✓ The Safety & Compliance Team implemented a High Visibility Safety Apparel (HVSA) protocol for high-risk areas of the Durango and Pagosa campuses and made plans to further improve the safety of the grounds.
- ✓ Installed seven additional electronic door controls in the Pagosa office for better security and auditing of physical activity.
- ✓ Crews attended Mesa Hotline School and participated either as instructors or attendees in various areas of study, to improve their skills.

TARGET: EXPERIENCE NO CYBER INCIDENTS THAT DISRUPT BUSINESS PROCESSES

- ✓ No cyber incidents in May.



KEEP THE LIGHTS ON

TARGET: STRENGTHEN WILDFIRE PREVENTION AND GRID RESILIENCE THROUGH PROACTIVE MITIGATION STRATEGIES AND INFRASTRUCTURE ENHANCEMENTS

- ✓ Crews changed 35 reject poles and installed 5 raptor protections.
- ✓ Tree crews made significant progress on the Los Ranchitos subdivision Right-of-Way (ROW) clearing project and completed scheduled trimming in the Bayfield area.

TARGET: LEVERAGE TECHNOLOGY TO IMPROVE OPERATIONAL SAFETY, EFFICIENCY, AND PROACTIVE MAINTENANCE

- ✓ No updates.

TARGET: INVEST IN CAPITAL IMPROVEMENTS TO MODERNIZE THE GRID INFRASTRUCTURE, INCLUDING UPGRADES TO SUBSTATIONS, TRANSFORMERS, AND TRANSMISSION LINES

- ✓ Identified and began installing electric fencing on three additional substations. Five substations already have this fencing around the power transformer to deter animals from climbing on top and creating outages.
- ✓ Completed the Wildwood cable replacement capital project in the Pagosa area improving reliability and increasing capacity.

TARGET: ACHIEVE TARGETED IMPROVEMENTS IN RELIABILITY METRICS, REDUCING THE FREQUENCY AND DURATION OF OUTAGES THROUGH SYSTEM UPGRADES, PREVENTATIVE MAINTENANCE, AND ENHANCED EMERGENCY RESPONSE

- ✓ Exceeded SAIDI and SAIFI goals for May.
- ✓ Crews responded to 42 unplanned outages, mostly due to natural causes.



Linda Whigham Glass
A ~60 foot tree snapped off about 12 feet up the trunk and landed on the electric and telephone lines. LPEA only took about 1.5 hours between being notified and having the electricity back on. What a great response!!!!



7 hrs Like Reply 🙏 1



Brian Shanley
[Linda Whigham Glass](#) thanks for the information.

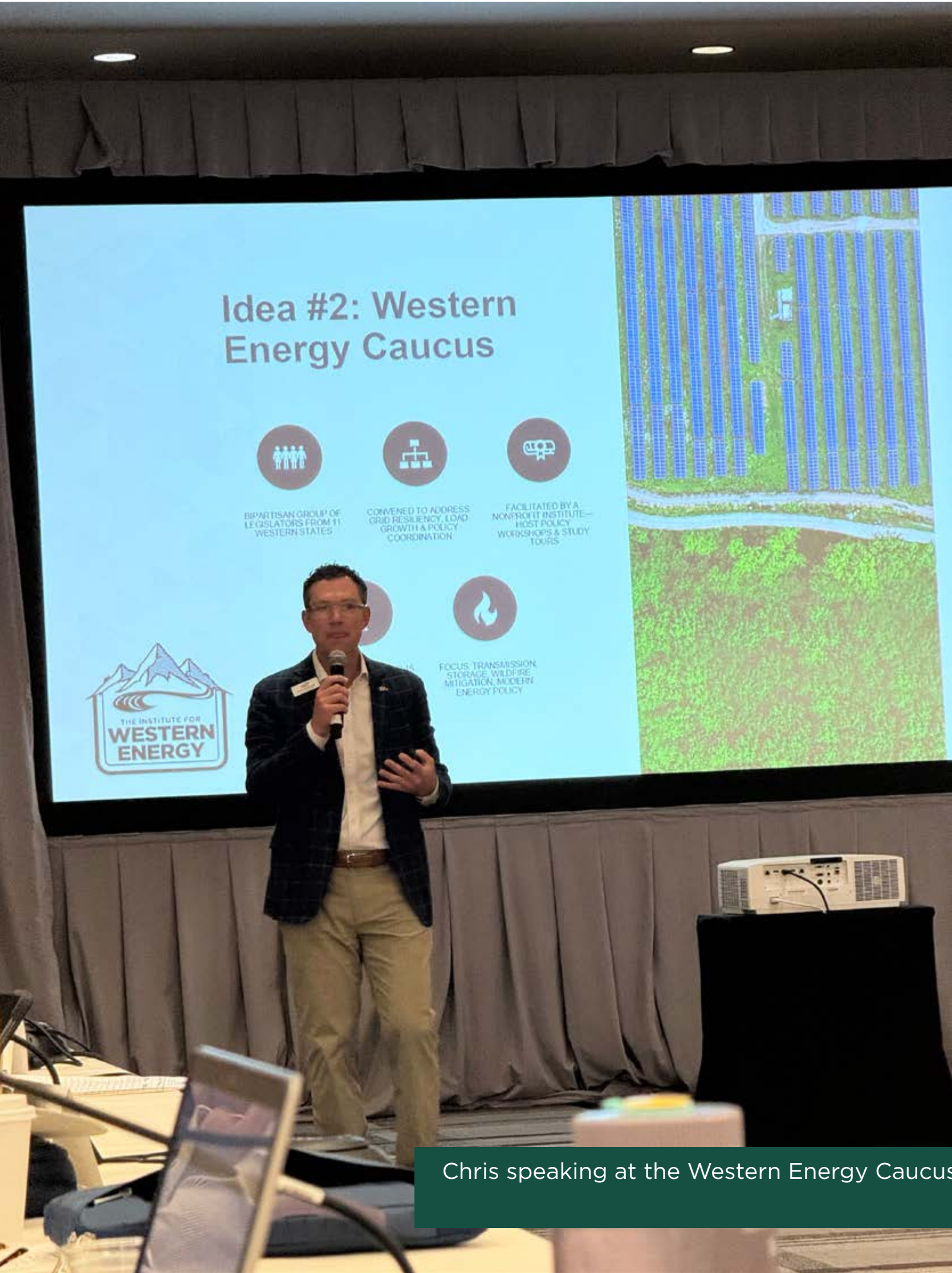
SOURCE CLEAN, LOCAL, LOWEST REASONABLE COST POWER

TARGET: ADVANCE LOCAL CLEAN POWER PROJECTS BY SECURING NEW RENEWABLE ENERGY GENERATION OPPORTUNITIES, COLLABORATING WITH STAKEHOLDERS, AND ENSURING PROJECT FEASIBILITY

- ✓ Began allowing meter socket adaptors to facilitate energy storage interconnections. These devices serve as a streamlined, plug-and-play method for connecting distributed energy resources (DERs) to the grid without extensive electrical panel upgrades or costly rewiring. They can simplify and reduce the expense of new interconnections for homeowners, especially with older or smaller electrical services, who want to add battery backup systems.

TARGET: COMPLETE ENERGY TRANSITION

- ✓ Made progress on the Request for Proposals (RFP).



Chris speaking at the Western Energy Caucus.



Key Performance Indicators

Be Safe And Excellent In All We Do

Keep The Lights On

Source Clean, Local, Lowest Reasonable Cost Power

Be A Trusted Community Partner

Maintain Strong Financial Health

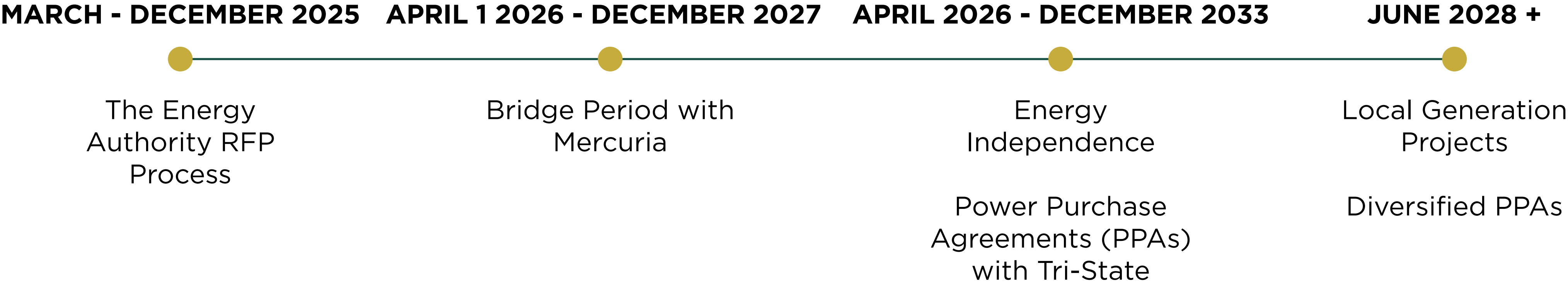
Prepare For The Future

Appendix

THE ROAD AHEAD

community power

from LPEA





BE A TRUSTED COMMUNITY PARTNER

Key Performance Indicators

Be Safe And Excellent In All We Do

Keep The Lights On

Source Clean, Local, Lowest Reasonable Cost Power

Be A Trusted Community Partner

Maintain Strong Financial Health

Prepare For The Future

Appendix

TARGET: ACHIEVE IMPROVEMENT IN OVERALL MEMBER SATISFACTION

- ✓ Monica Vick earned a silver award from the National Rural Electric Cooperative Association (NRECA) at the Connect Conference for Best Graphic Design in honor of the 85th Anniversary branding.

TARGET: STRENGTHEN COMMUNICATION WITH MEMBERS THROUGH MULTIPLE CHANNELS

- ✓ Kevin Camp met with many retailers of outdoor power equipment and electric water heaters to promote LPEA rebates ahead of the Memorial Day weekend sales.
- ✓ Chris engaged with Hesperus members during a Current Conversations event at the Breen Community Building.
- ✓ Showcased LPEA electric fleet vehicles (EV), EV charging options, and other energy-efficiency products at the annual meeting as a way to engage members in beneficial electrification conversations.
- ✓ Saw a 7.9% increase in Board election voter participation over 2024, with 47% of ballots cast via the new online voting option.

TARGET: STRENGTHEN LPEA'S PRESENCE AND ENGAGEMENT WITHIN THE LOCAL COMMUNITY BY FOSTERING MEANINGFUL CONNECTIONS, PROMOTING SUSTAINABILITY EFFORTS, AND ENHANCING PUBLIC AWARENESS OF THE ENERGY TRANSITION AND EDUCATIONAL OUTREACH

- ✓ Recognized our Youth Tour participants and Scholarship awardees at the Annual Meeting.

- ✓ Hosted the Seal of Climate Literacy Event in partnership with 9R and Lyra, recognizing local students' meaningful work in climate literacy. Chris Hansen, Former CO Representative Barbara McLaughlin and Dr. Karen Chesser spoke about the importance of this program and awarded nine students with medals, in the second year of this program.
- ✓ Hosted our annual meeting, with over 230 members in attendance, an increase of 188% over previous four-year average. The meeting featured updates on our 2024 achievements and future plans.
- ✓ Provided Arc Flash demonstrations for Ignacio Elementary and Bayfield Intermediate School.

TARGET: IDENTIFY THE EVOLVING NEEDS OF THE MEMBERSHIP

- ✓ Kevin Camp and Dominic May collaborated with the City of Durango to promote Level 1 EV charging. The City will provide \$10k to support the installation of charging outlets at Peak Food and Beverage and Fort Lewis College. We will supply energy monitoring equipment so the City will have foundational data to further promote this program. This directly relates to increasing daytime load.

BE A TRUSTED COMMUNITY PARTNER

The 2025 Annual Meeting was hosted on May 21.



MAINTAIN STRONG FINANCIAL HEALTH

KEY PERFORMANCE INDICATORS:

TARGET: OPERATING MARGIN AT 3%

✓ 5.40% YTD - This goal was met for May.

TARGET: CASH RESERVES AT 12-20%

! 5.01% YTD - An improvement from April. We continue to utilize cash to finance elevated capital spending levels to avoid higher borrowing costs.

TARGET: EQUITY PERCENTAGE IS 40-55%

✓ 56% - This goal was met for May.

TARGET: LONG-TERM DEBT IS LESS THAN 100% OF EQUITY

✓ 58% - This goal was met for May.

TARGET: MDSC IS GREATER THAN OR EQUAL TO 1.35 (DEBT COVENANT)

✓ 2.76 YTD - This goal was met for May.

TARGET: IMPLEMENT A COMPREHENSIVE FINANCIAL STRATEGY THAT ENSURES LONG-TERM SUSTAINABILITY BY OPTIMIZING COST STRUCTURES, SECURING DIVERSE FUNDING SOURCES, MAINTAINING HEALTHY FINANCIAL RATIOS, AND POSITIONING FOR FAVORABLE CREDIT RATINGS

✓ Continued to make progress in preparing for credit rating.

✓ Continued to make progress on a long-term capital forecast.

PREPARE FOR THE FUTURE

Key Performance Indicators

Be Safe And Excellent In All We Do

Keep The Lights On

Source Clean, Local, Lowest Reasonable Cost Power

Be A Trusted Community Partner

Maintain Strong Financial Health

Prepare For The Future

Appendix

TARGET: POSITION LPEA FOR LONG-TERM GROWTH AND RESILIENCE THROUGH INNOVATIVE PROGRAMS, STRATEGIC PARTNERSHIPS, AND FORWARD-THINKING INVESTMENTS THAT OPTIMIZE THE GRID AND SUPPORT EVOLVING ENERGY NEEDS

- ✓ Chris Hansen and Elizabeth Howe attended the Northwest Public Power Association's (NWPPA) annual meeting and conference in Santa Rosa, California. Elizabeth serves as a trustee on NWPPA's board. Chris presented to the Government Relations Committee the work being done in Colorado and beyond by several organizations, seeking collaboration with NWPPA and its members.

TARGET: DEVELOP PARTNERSHIPS TO ACHIEVE THE BOARD'S BROADBAND GOAL

- ✓ Continued to make progress.

TARGET: IDENTIFY AND SECURE GRANTS AND FUNDING OPPORTUNITIES TO SUPPORT KEY INITIATIVES THAT ADVANCE LPEA'S SUSTAINABILITY, INNOVATION, AND COMMUNITY ENGAGEMENT GOAL

- ✓ Made advancements on the following grants:
 - Microgrids for Community Resiliency (MCR) for the Shenandoah battery
 - Wildfire Assessment and Resilience for Networks (WARN) for undergrounding of overhead lines
 - Southern Ute Indian Tribe (SUIT) Resiliency grant

Reimbursement funding is flowing with WARN and SUIT. We have received the draft loan documents associated with the Powering Affordable Clean Energy (PACE) grant and it is being evaluated.

TARGET: RESEARCH AND IMPLEMENT NEW TECHNOLOGIES AND STRATEGIES THAT OPTIMIZE LPEA'S GRID, IMPROVING RELIABILITY, EFFICIENCY, AND RESILIENCE TO MEET FUTURE ENERGY DEMANDS

- ✓ Achieved a 300% increase year to date (YTD) versus 2024 in the number of interconnection applications that include or are solely batteries.



Chris presented to the NWPPA Government Relations Committee on behalf of The Institute for Western Energy.

