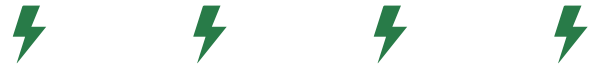


\$4.5 MILLION IN CAPITAL CREDITS Distributed To Members in July



As a member of LPEA, you are also an owner, which means you directly invest in - and benefit from - the co-op's success. When you make a payment to LPEA, a portion of that payment goes directly toward your investment in our electrical system.

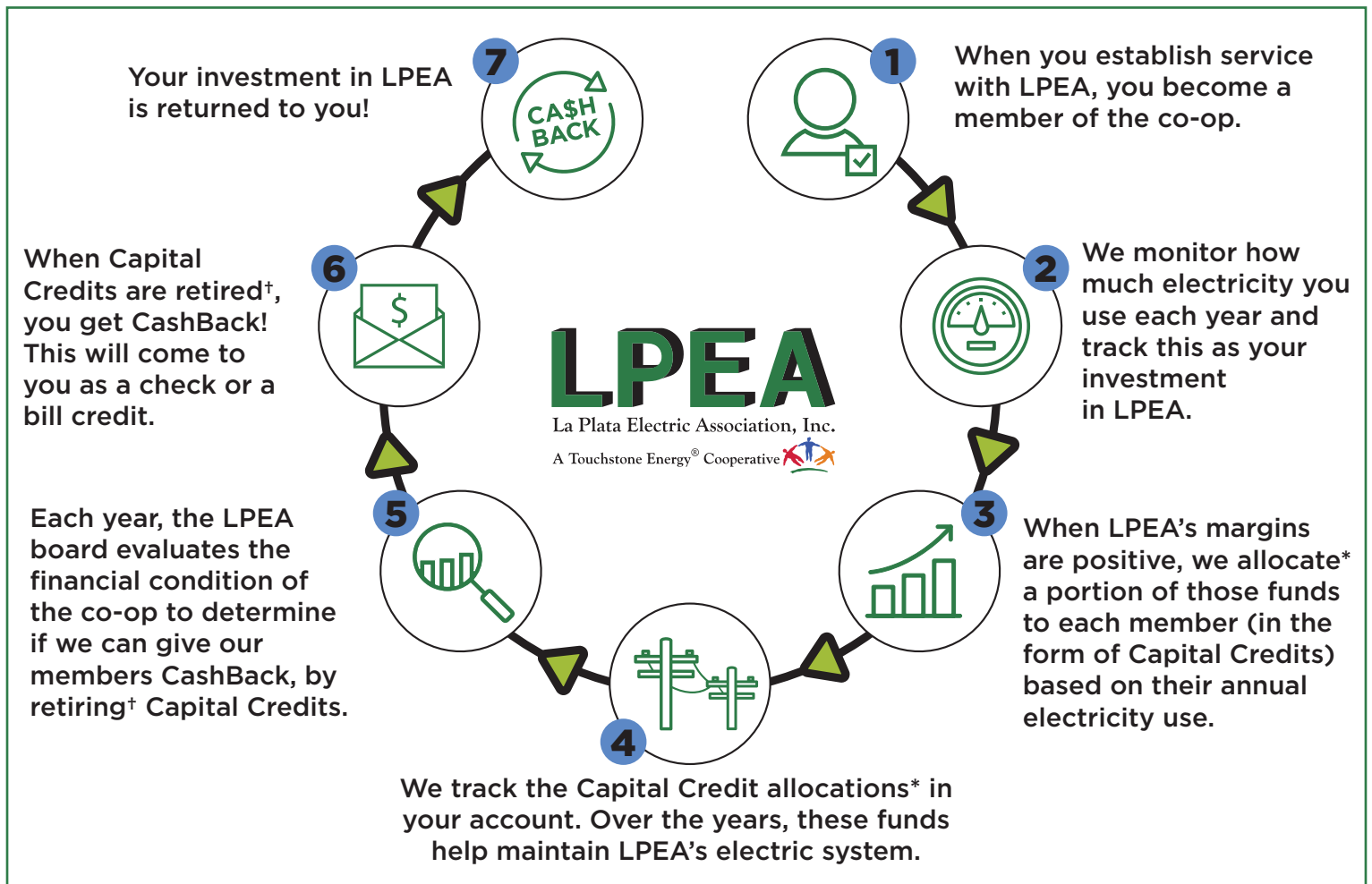
In years that LPEA earns positive margins (i.e., profits), we allocate a portion of those profits to you based

on the amount of electricity you use in the form of Capital Credits.

The Capital Credit allocation and retirement process is called the LPEA CashBack program. In 2022, the LPEA board elected to retire \$4.5 million in Capital Credits to our members. You will see that as a check in the mail (for amounts over \$100) or as a bill credit on your July 2022 LPEA bill.

**Allocation: Your allocation is your share of LPEA's annual margins, based on the amount of electricity you used in that year. These funds are NOT available to you until they are retired.*

**Retirement: When these funds are no longer needed for operating capital they are retired, and your allocations are returned to you.*



Update on SmartHub
Email us: csr@lpea.coop
Call: (970) 247-5786

Be wildfire ready,
UPDATE YOUR CONTACT INFO WITH LPEA!



 **Whole House Fan REBATES**

\$100 for a new or replacement fan

Details and more rebates at lpea.coop/rebates



HOT SUMMERS AND COLD WINTERS: How Heat Pumps Help With Both



For those of you “in the know” when it comes to heat pump technology, there is a perception that they don’t operate well in cold climates. While this may have been true a few years ago, it is not true today. Cold Climate Air Source Heat Pumps (ccASHP) are the latest evolution in efficient air source heat pump design. They offer a highly efficient alternative to other heat sources.

A large portion of LPEA members currently heat their homes with propane. ccASHPs have the potential to significantly reduce your total energy bill in the winter AND provide the added benefit of air conditioning in the summer. For those of us who haven’t been able to open our windows due to wildfire smoke and have experienced the hotter summers recently, this is a benefit that can’t be overlooked.

ccASHPs operate with nearly 400% efficiency at 47°F or above. When temperatures drop to zero, a ccASHP will sustain efficiencies of about 200%. ccASHPs are so efficient that they can provide space heating needs with an overall seasonal efficiency of 250%, compared to a natural gas or propane furnace which operates in the 90-96% efficiency range. ccASHP can achieve these efficiencies by moving heat from one place to another rather than creating its own heat, even in the middle of winter. Research shows ccASHPs are a viable and efficient technology that meets homeowners’ heating and cooling needs in the SW Colorado climate zone. **Get all the details at lpea.coop/electrify.**

Need to replace your heating system? **NOW** is the time.

GET AN AUDIT: A professional energy audit identifies ways to reduce your total heating and cooling needs. You may be able to install a smaller system and increase lifetime savings.

CONSIDER A HEAT PUMP: Heat pumps are a great option whether you need a complete replacement, want to add specific heating and cooling zones, or want to supplement your existing system.

FIND AND BOOK A CONTRACTOR: They are already booking well into the summer/fall. Check out our list of quality install contractors at lpea.coop/heat-pumps. Ask if your home might require a panel upgrade or additional wiring.

Get your rebate: LPEA offers generous rebates to offset costs. Learn more at lpea.coop/rebates or call us at (970) 247-5786.

The latest news, services, programs, and resources from LPEA. Have a question or comment? Email us at comments@lpea.coop.



BOARD MEETINGS

August 17 + September 21
9 a.m. – 3 p.m.*

The agenda, access, and location details will be posted online in advance. Public comments are heard at the beginning of the meeting shortly after 9 a.m.

More at: lpea.coop/lpea-board-directors-resources



COMMITTEE MEETINGS

LPEA committee meetings change regularly to accommodate board member schedules. For upcoming meeting dates and times visit: lpea.coop/board-committees

**All meetings are open to the public. Depending on the latest guidelines around COVID-19, meetings may be held in person, virtually, or both. Visit lpea.coop for the most up-to-date details.*



LPEA CLOSURES

Labor Day: Monday, September 5



LPEA GRANTS

The Round Up Foundation Board of Directors approved five grants **totaling \$17,888 in June**. Approved Round Up Grants were for Animas High School, Durango 9R Athletics, and Wings Early Childhood Center. Approved Educational Grants were for the La Plata Youth Services and Foundation for Archuleta County Education (FACE).