

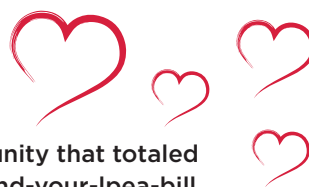
GET MONEY BACK IN 2022 WITH LPEA'S REBATE PROGRAMS

With a new year comes new ways to save with LPEA. If you're considering an upgrade or improvement project for your home or business this year, remember you can get money back through the following rebate programs.

REBATE TYPE	RESIDENTIAL	COMMERCIAL	REBATE DETAILS
Energy Efficiency Audits 	✓	✓	<ul style="list-style-type: none"> Up to \$150 for residential audits Up to \$300 for commercial audits
LEDs 	✓	✓	<ul style="list-style-type: none"> 50% of the cost of LED light bulbs purchased, up to \$8 per/bulb. Maximum 50 bulbs per member per year. For large or small commercial LED lighting retrofit projects and new construction. Amounts vary based on the project.
Energy Star® Appliances 	✓		<ul style="list-style-type: none"> \$90 per unit for a heat pump clothes dryer \$30 per unit for a top-load clothes washer \$40 per unit for a front-load clothes washer \$30 per unit for an electric clothes dryer \$30 per unit for a refrigerator or freezer \$60 per unit for recycling your old refrigerator or freezer
Electric Heat Pump Systems: Air-Source 	✓	✓	<ul style="list-style-type: none"> \$1,000 to \$2,500 for Air Source Heat Pump HSPF > 9.0, SEER > 15 \$1,500 to \$3,500 for Cold Climate Air Source Heat Pump HSPF >10.0, SEER > 16. Variable speed compressor or minimum of 3 stages of settings for fan speed.
Electric Heat Pump System: Other 	✓	✓	<ul style="list-style-type: none"> \$100/unit* for Electric Thermal Storage (ETS) backup \$550/ton* for new ground source with minimum 3/4 ton \$250/ton* for replacement ground source with minimum 3/4 ton \$450/ton* for air-to-water with minimum EER 19, minimum COP 4 *Not to exceed 50% of material cost
Hybrid Water Heaters 	✓	✓	<ul style="list-style-type: none"> \$700 for a hybrid heat pump water heater \$550 for standard electric water heater to heat pump water heater
Electric Thermal Storage (ETS) Heating 	✓	✓	<ul style="list-style-type: none"> \$50/kW for ETS heater \$30/kW for Thermal Slab heating
Whole House Fan 	✓		<ul style="list-style-type: none"> \$100 for new or replacement fan
Induction Cooktops/Ranges 	✓		<ul style="list-style-type: none"> Up to \$350 per unit for new construction and gas to electric Up to \$100 per unit for electric to electric induction
Timers and Smart Thermostats 	✓		<ul style="list-style-type: none"> \$25 per programmable thermostat or timer \$75 per smart thermostat controlling electric load
Outdoor Electrical Equipment and E-bikes 	✓	✓	<ul style="list-style-type: none"> 25% of the price of an electric bike, snowblower, lawn mower, leaf blower, pruner, chainsaw etc. (up to \$50 - \$150 per item). Combined maximum rebate \$300 per member per year.
Electric Vehicle Chargers 	✓	✓	<ul style="list-style-type: none"> Up to two free Level 2 plug-in home chargers (\$700 value each) Up to \$500 (not to exceed 50% of costs) for plug installation Up to \$500 (not to exceed 50% of costs) for the independent purchase and installation of a Level 2 charger Rebates for business and public use charging stations also available
All-Electric New Construction Bonus 	✓		<ul style="list-style-type: none"> \$500 bonus to residential members building new all-electric homes
Income-Qualified Weatherization 	✓		<ul style="list-style-type: none"> Funding available only for income-qualified members. Contact us for more details.

For more details and application materials, visit: lpea.coop/rebates

THANK YOU, Members!



Your 2022 Round Up dollars funded 17 grants in our community that totaled \$55,115! For more details and to sign up visit lpea.coop/round-your-lpea-bill



TIPS ON HOW TO BE OUTAGE READY

When the lights go out, here are eight tips to help you weather any LPEA outage.

Before an outage:

- For those who depend on power for internet and cellular service, we recommend you secure a landline telephone for emergency situations such as this.
- It is your responsibility to protect yourselves and your property by preparing for occasional outages. We recommend you protect your appliances from surges by installing surge protectors. LPEA sells and installs whole-home surge protectors. Visit lpea.coop/surge-protectors for more information.
- If you live in an area regularly impacted by storms, and/or need to ensure 24/7 electricity for your property, you may want to consider a backup generator. LPEA offers guidelines to ensure your generator is installed and operated safely in the Safety section on our website.
- No matter how much LPEA invests in improving our infrastructure, occasional outages are inevitable. Learn more about how to be prepared at lpea.coop/weathering-winter-storm.



During an outage:

- LPEA's outage hotline is available 24/7 by calling (970) 247-5786 and pressing option 5. When call volumes are high, you will be sent to an automated reporting system.
- Sign up for LPEA's free Outage Texting Service to report your outage, receive outage updates, or check the status of your outage all via text. To sign up, text "TEXTLPEA" to 1-888-839-5732 from the phone number registered on your LPEA account.
- To see the most up-to-date outage information at any time, day or night, visit our online outage map at outage.lpea.coop.
- During major outages, LPEA regularly posts updates on our up-front phone message, on lpea.coop and on Facebook and Twitter.

LPEA WIRE

The latest news, services, programs, and resources from LPEA. Have a question or comment? Email us at comments@lpea.coop.



BOARD MEETINGS

February 16 + March 16
9 a.m. - 3 p.m.*

The agenda, access, and location details will be posted online in advance. Public comments are heard at the beginning of the meeting shortly after 9 a.m.

More at: lpea.coop/lpea-board-directors-resources



COMMITTEE MEETINGS

LPEA committee meetings change regularly to accommodate board member schedules. For upcoming meeting dates and times visit: lpea.coop/board-committees

**All meetings are open to the public. Depending on the latest guidelines around COVID-19, meetings may be held in person, virtually, or both. Visit lpea.coop for the most up-to-date details.*



HOLIDAY

LPEA will be closed Monday, February 21, in observance of President's Day.



LPEA GRANTS

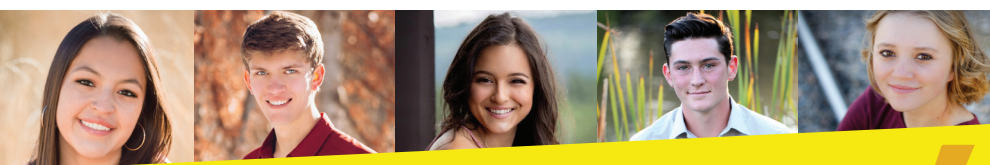
The Round Up Foundation Board of Directors approved **three grants in December totaling \$10,000** for The Good Food Collective, Weasel Skinners 4-H Club, and La Plata Search and Rescue. In 2022 LPEA Round Up Foundation Board approved 38 Round Up grants and education grants totaling \$118,754.



Get low-interest loans to power your home energy improvement projects.

Learn more at lpea.coop/bill-financing-program

On-Bill Financing is a partnership between



Scholarship Deadline Reminder

Applications due March 1st, 2022

LPEA is offering ten college scholarships from \$500 to \$28,000 in value.

All graduating high school seniors, including GED graduates, residing within LPEA's service territory are eligible to apply.

More details at lpea.coop/scholarships

